

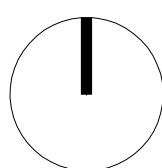
Wohnbause 08

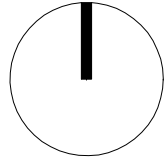
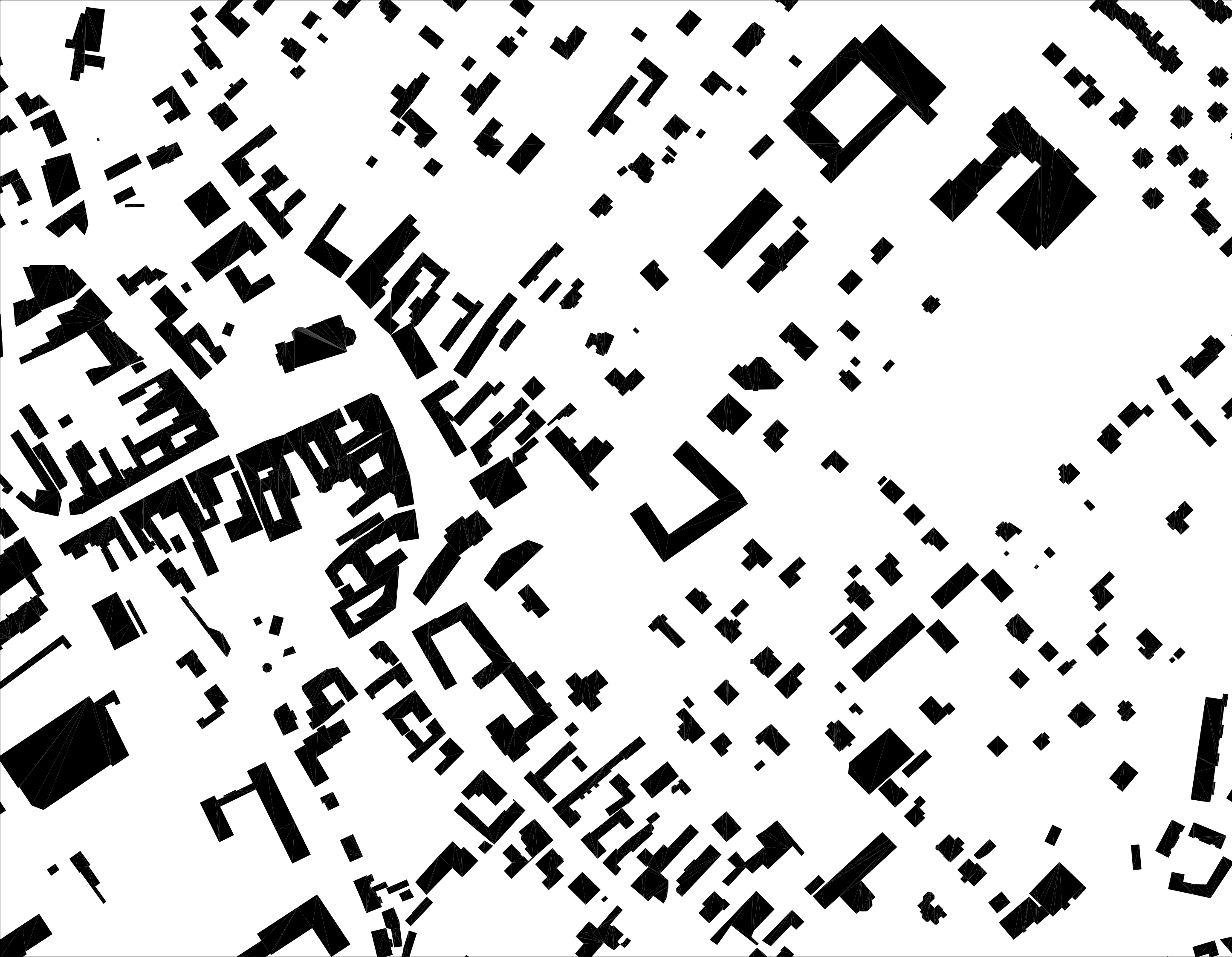
wohnbau ss08_gruppe 08 kindermann_harald glanz markus neumaier joachim vollmann



Strukturplan. 2000

wohnbau ss08_gruppe 08 kindermann_glanz neuumaier vollmann



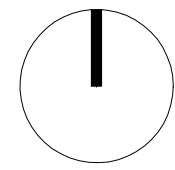


Schwarzplan. 2000

wohnbau ss08_gruppe 08 kindermann_glanz neuumaier vollmann

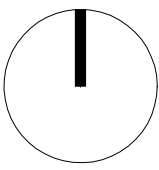


- nachbargeb.
- flachdach
- fahrweg
- fussweg, platz
- grün, öffentl.
- grün, privat
- dachgärten
- bepflanzung
- erschliessung



Lageplan. 500

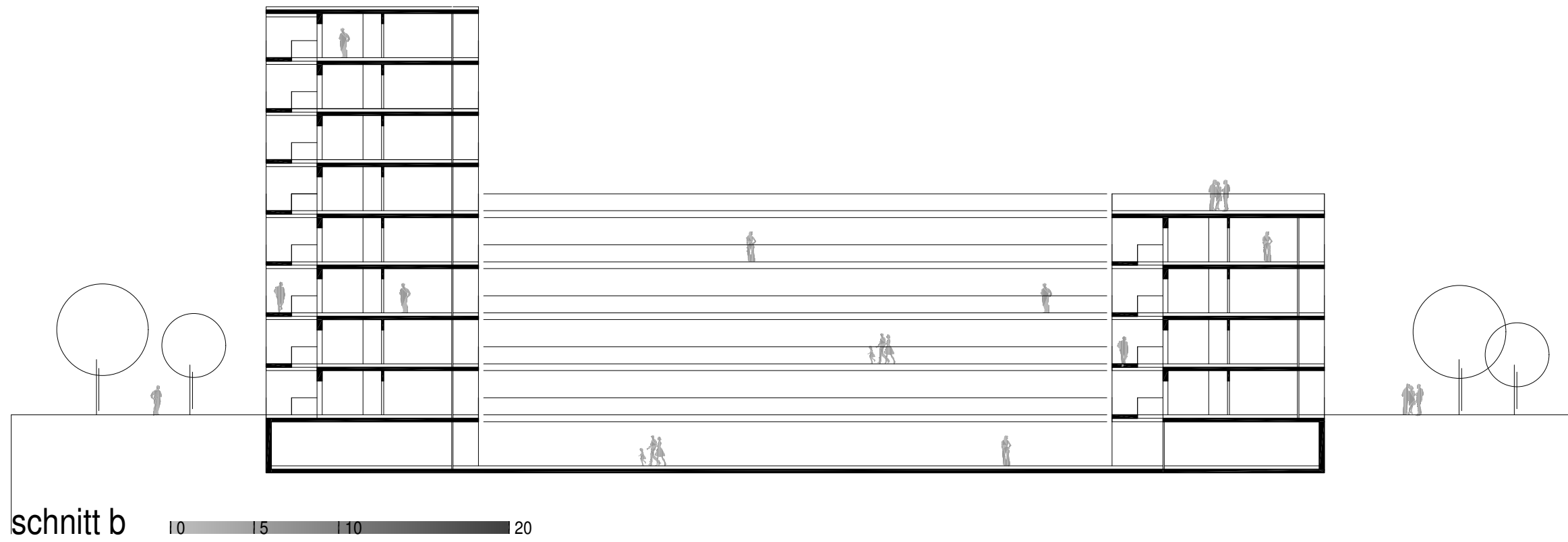
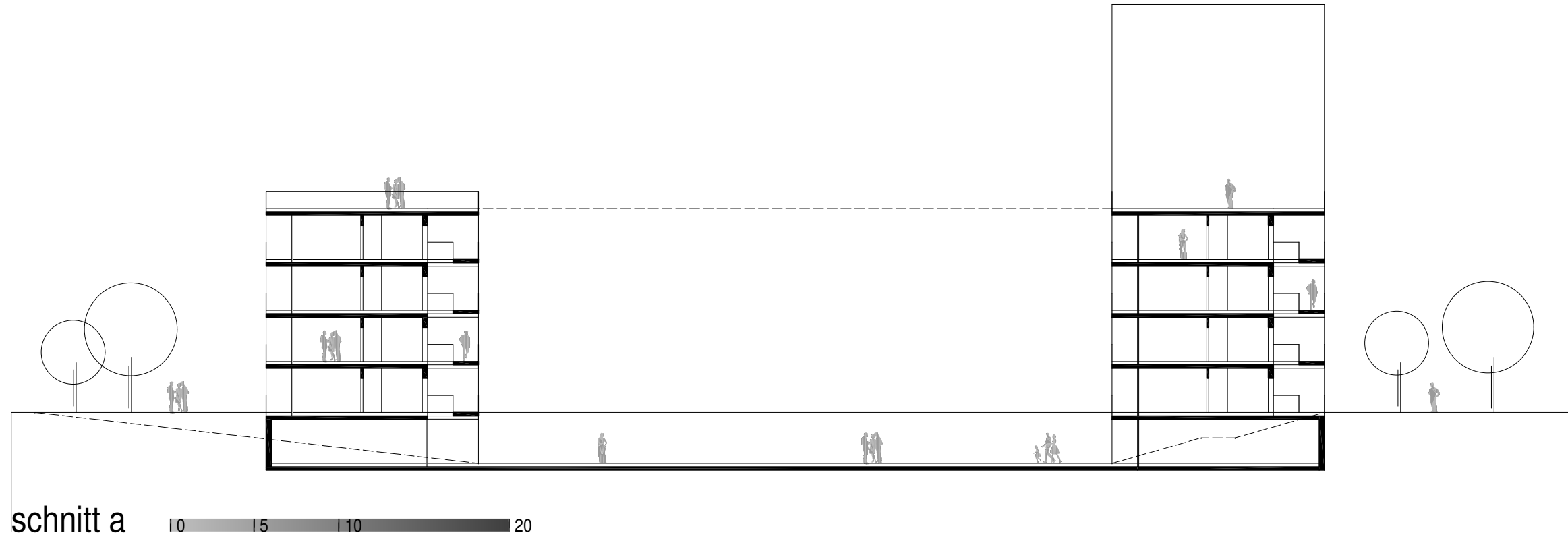
wohnbau ss08_gruppe 08 kindermann_glanz neumaier vollmann



wohnungsraster | 0 | 2.5 | 5 | 10

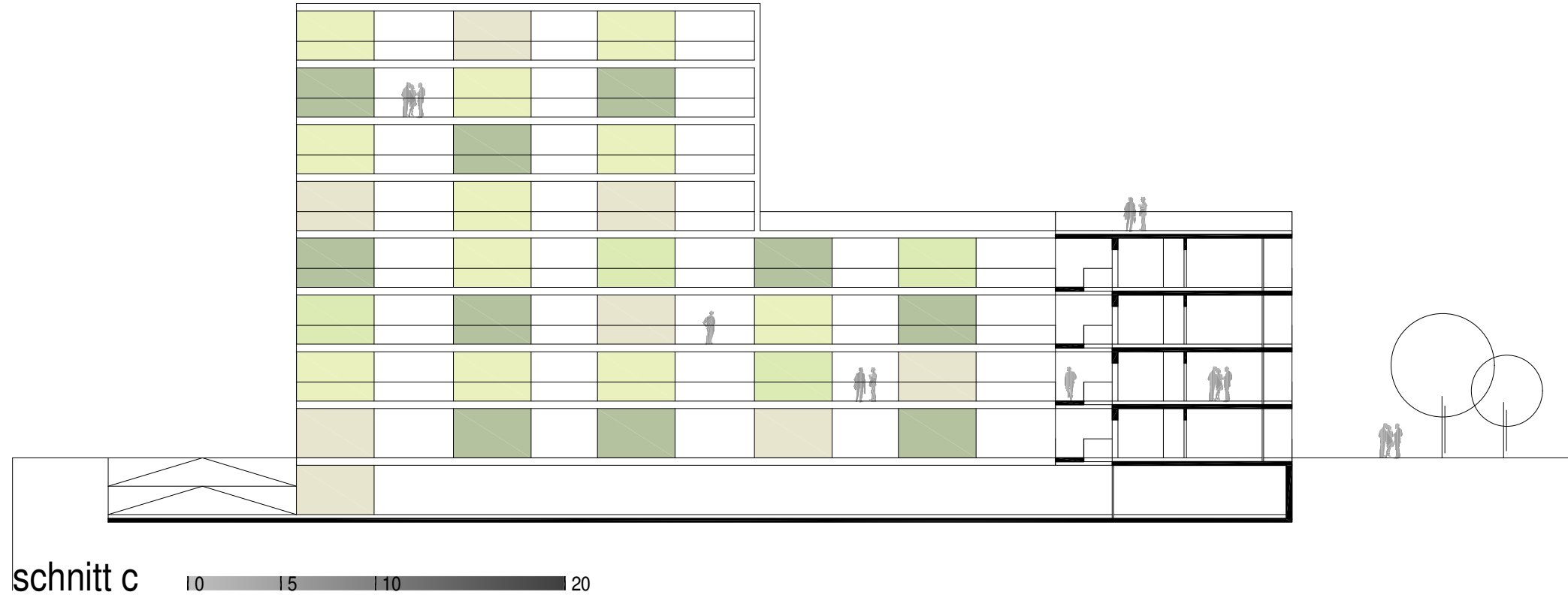
Wohnungsraster

wohnbau ss08_gruppe 08 kindermann_glanz neuumaier vollmann



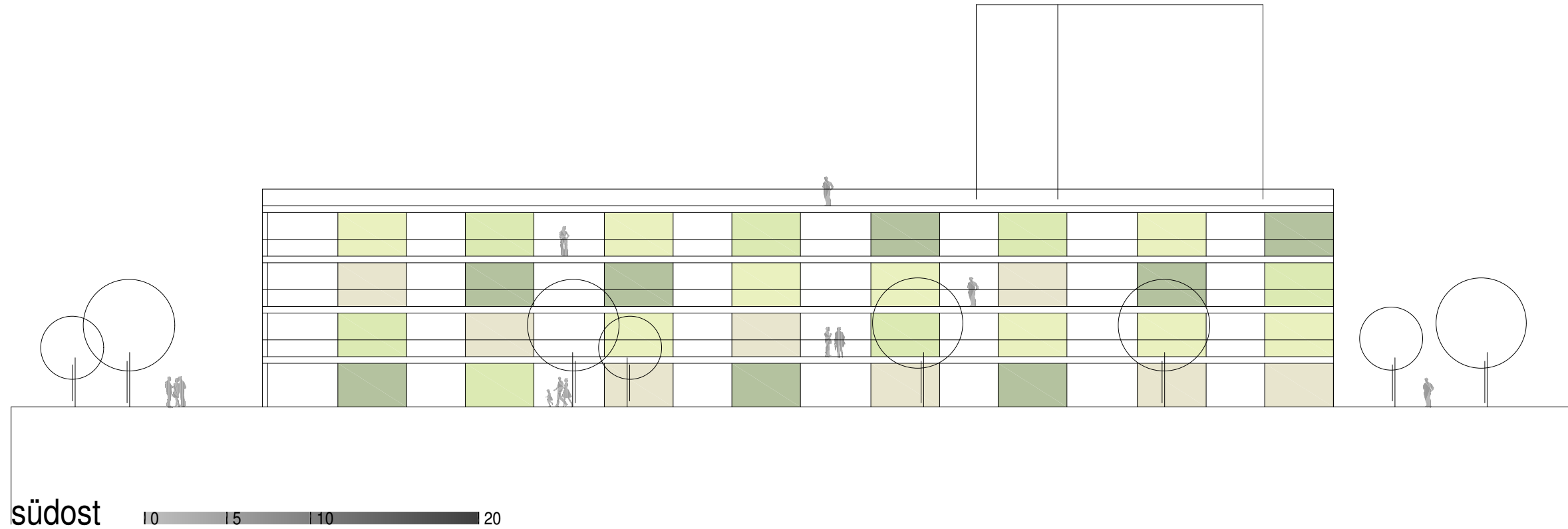
schnitte

wohnbau ss08_gruppe 08 kindermann_glanz neuumaier vollmann



schnitt c

10 15 10 20

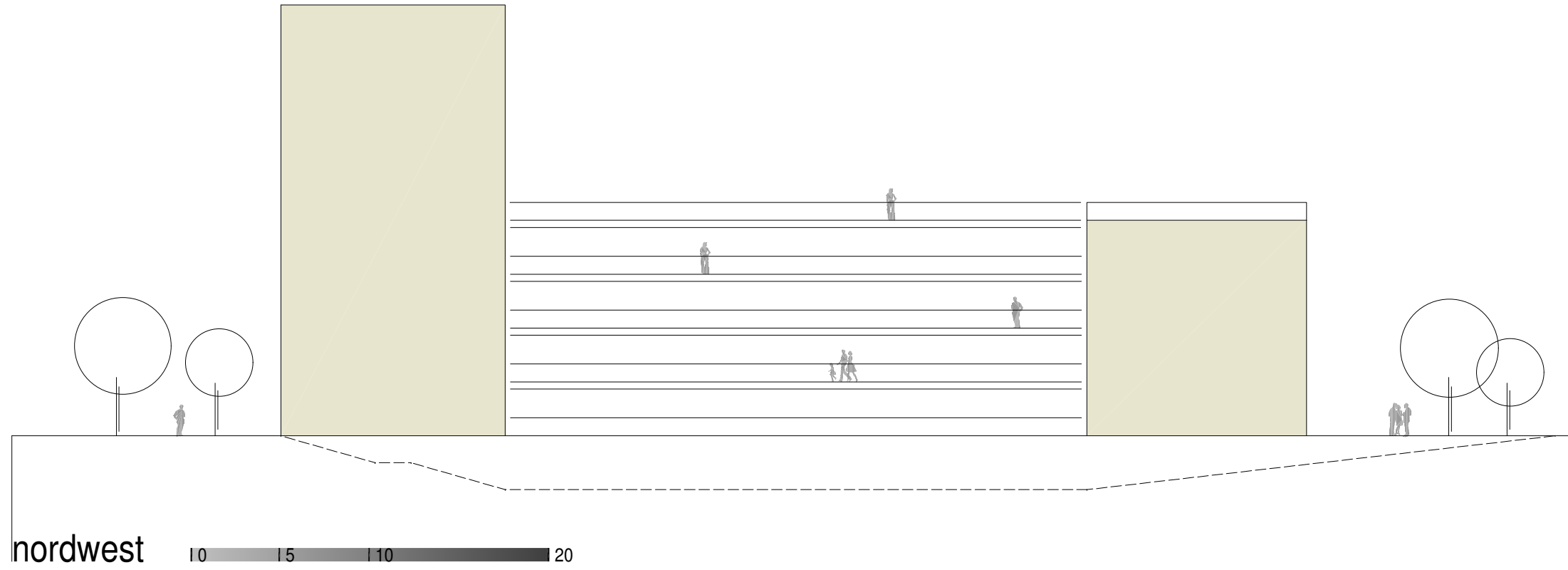
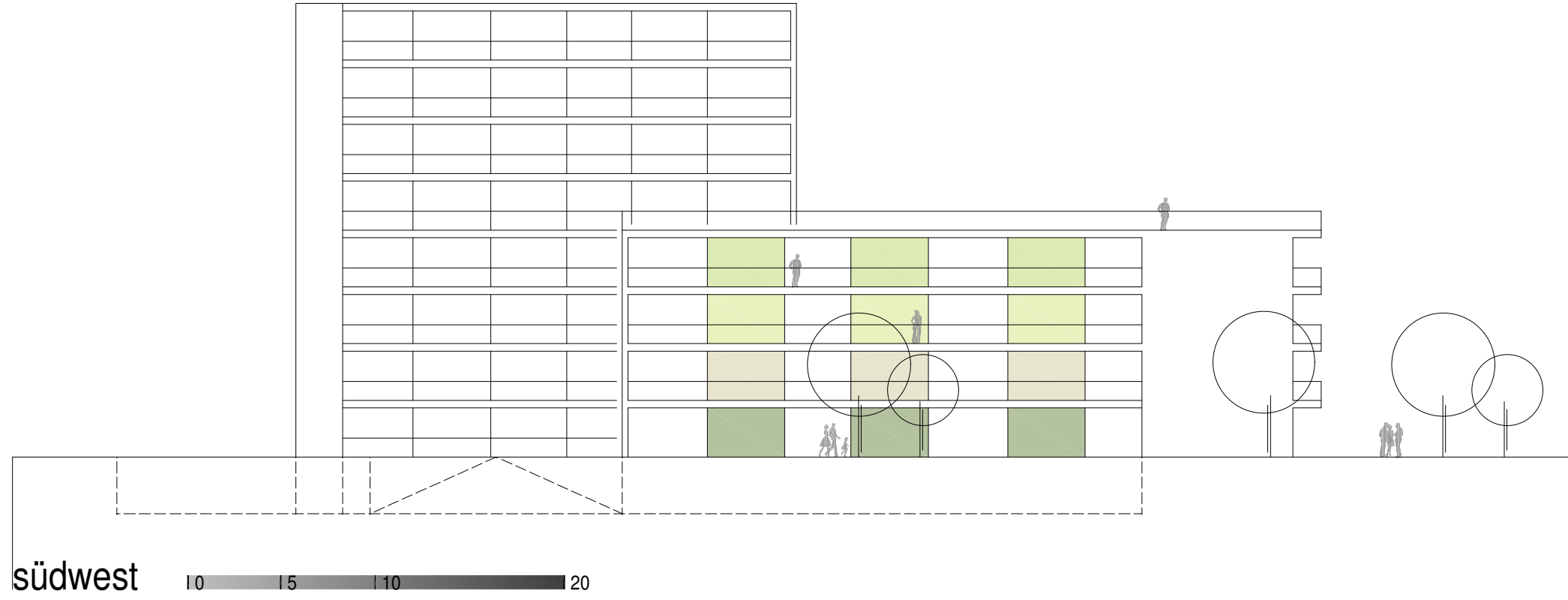


südost

10 15 10 20

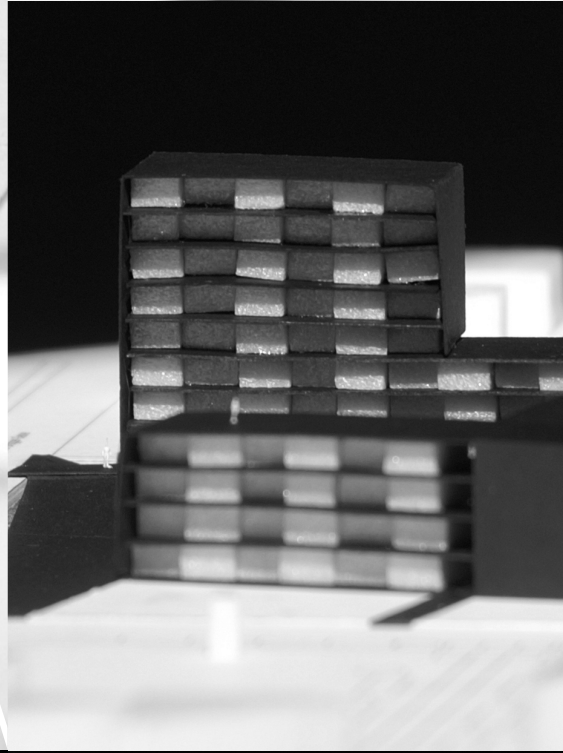
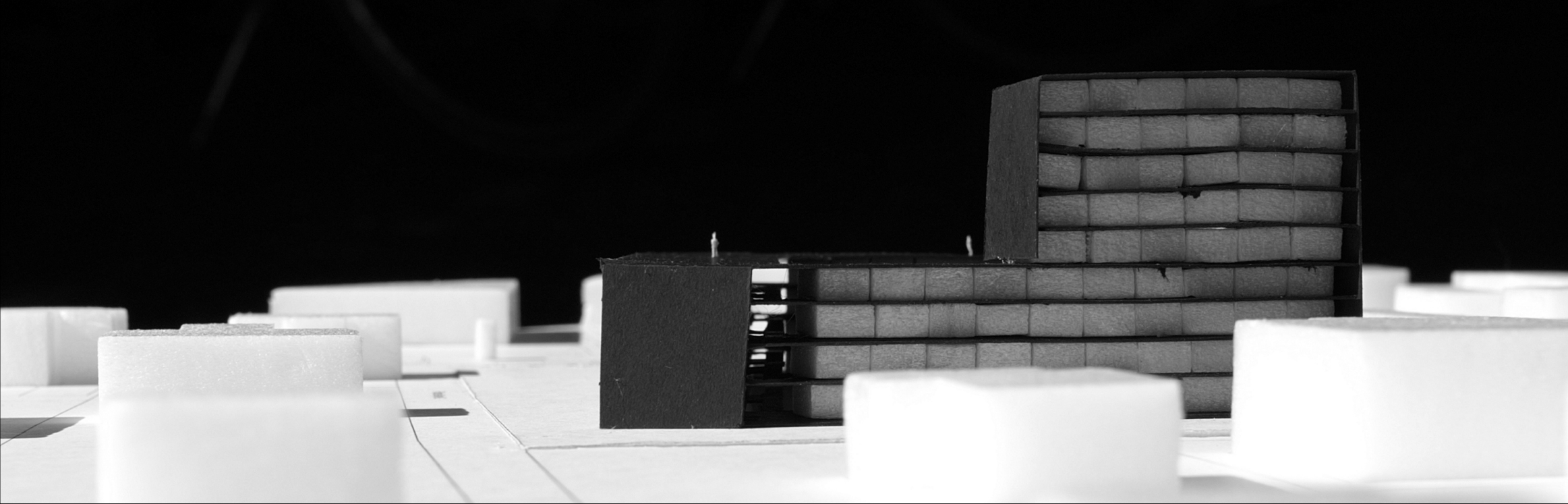
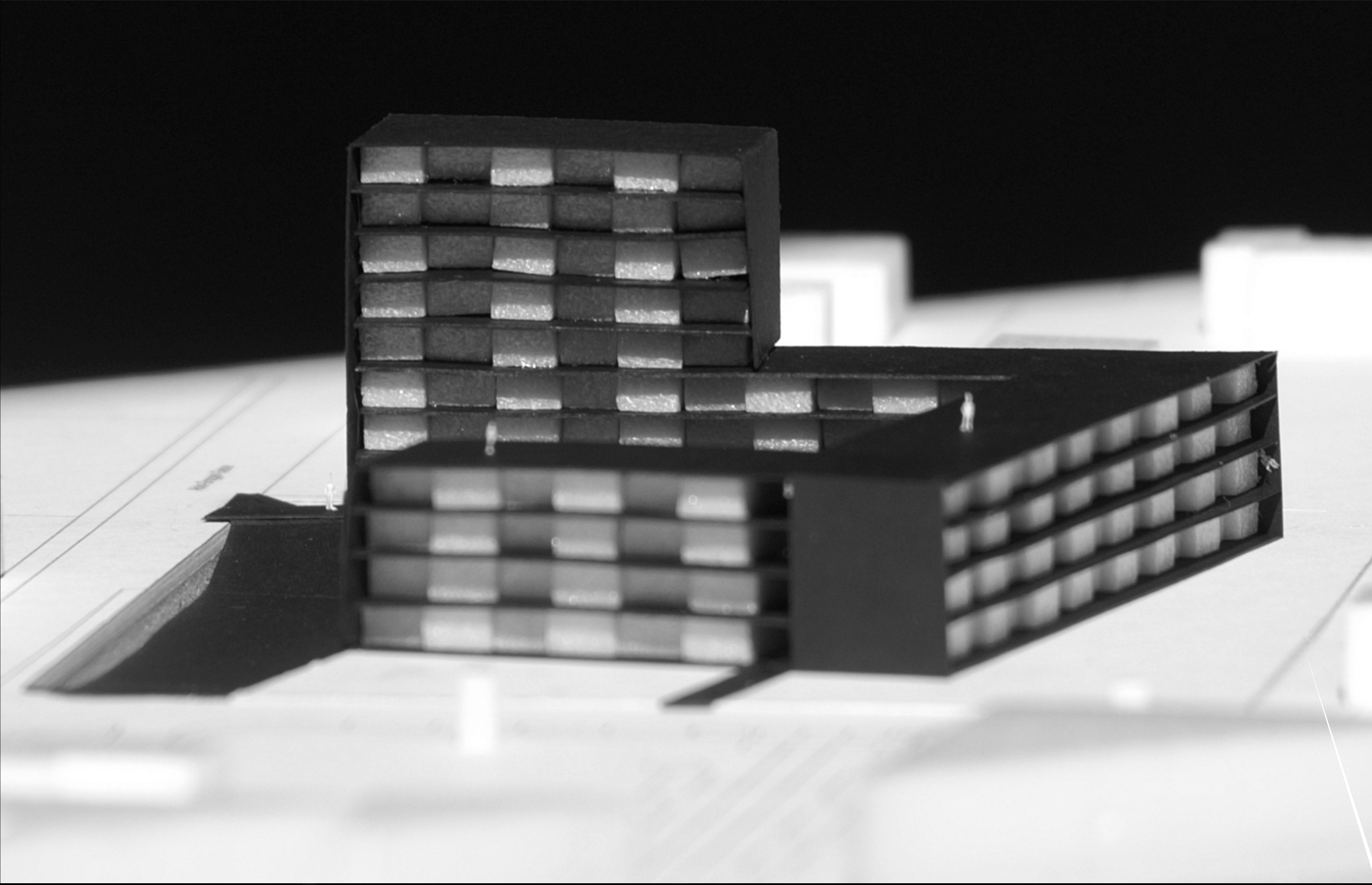
schnitt und ansichten

wohnbau ss08_gruppe 08 kindermann_glanz neuumaier vollmann



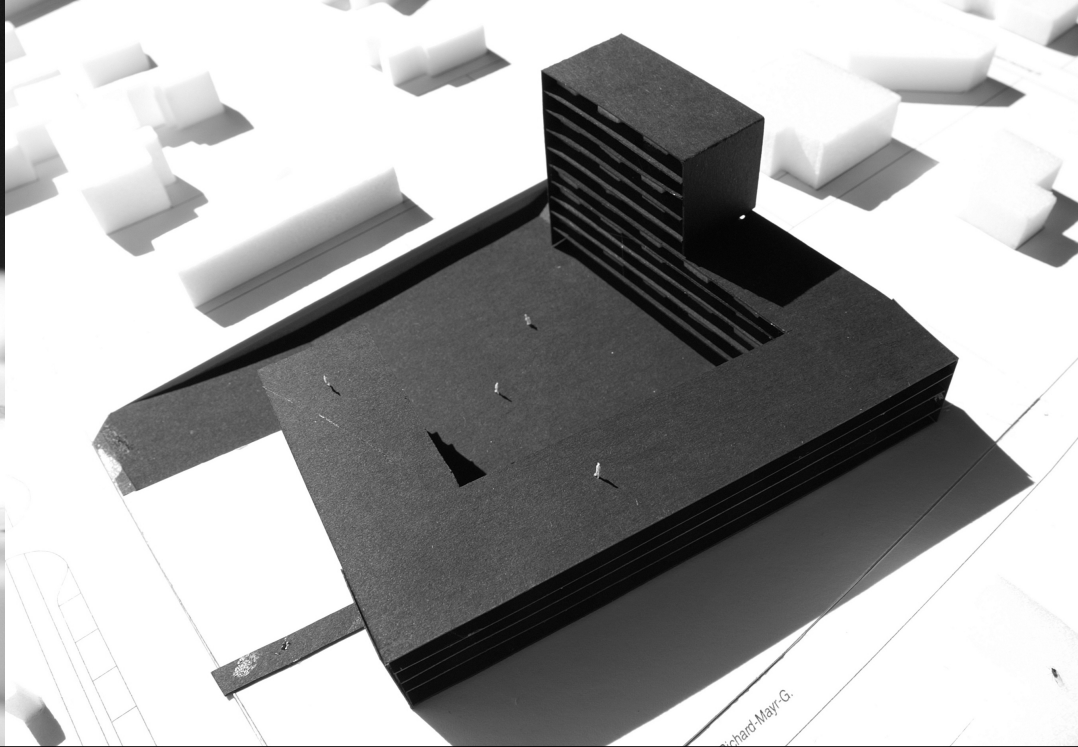
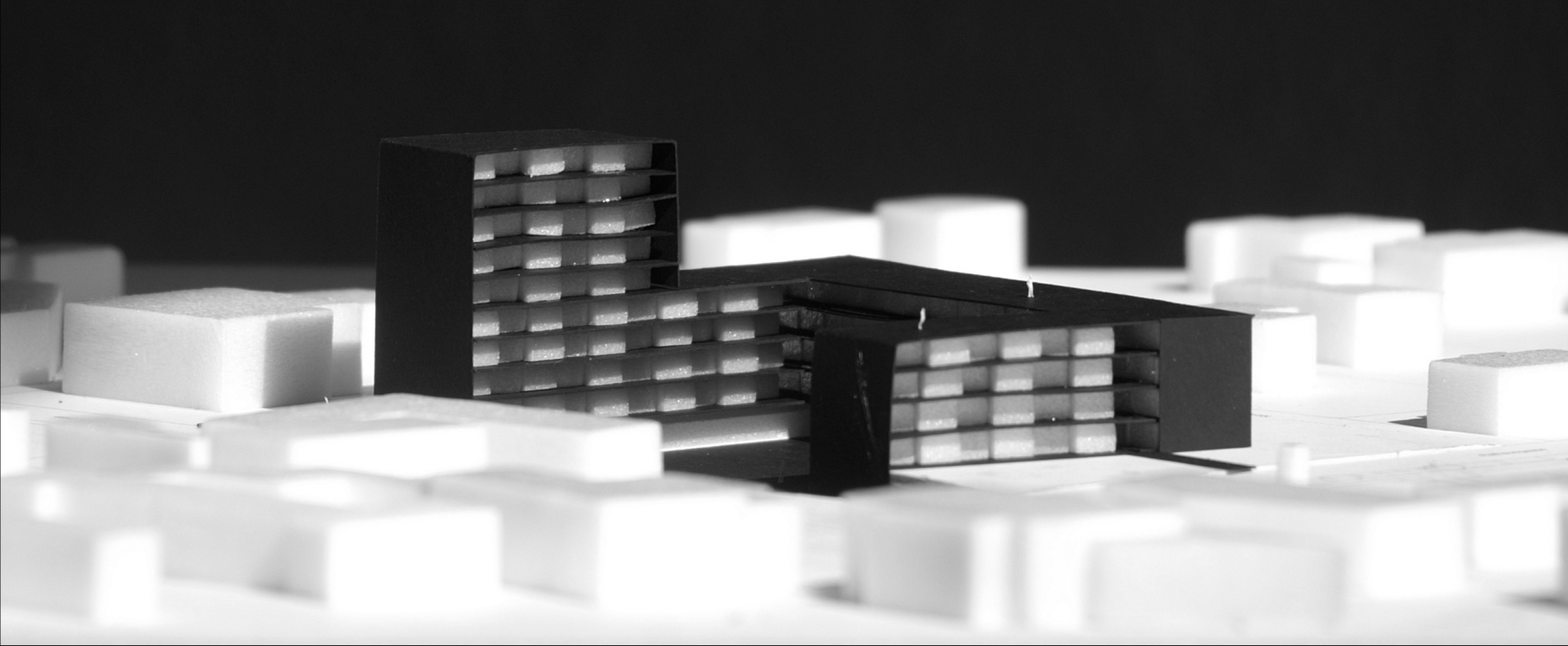
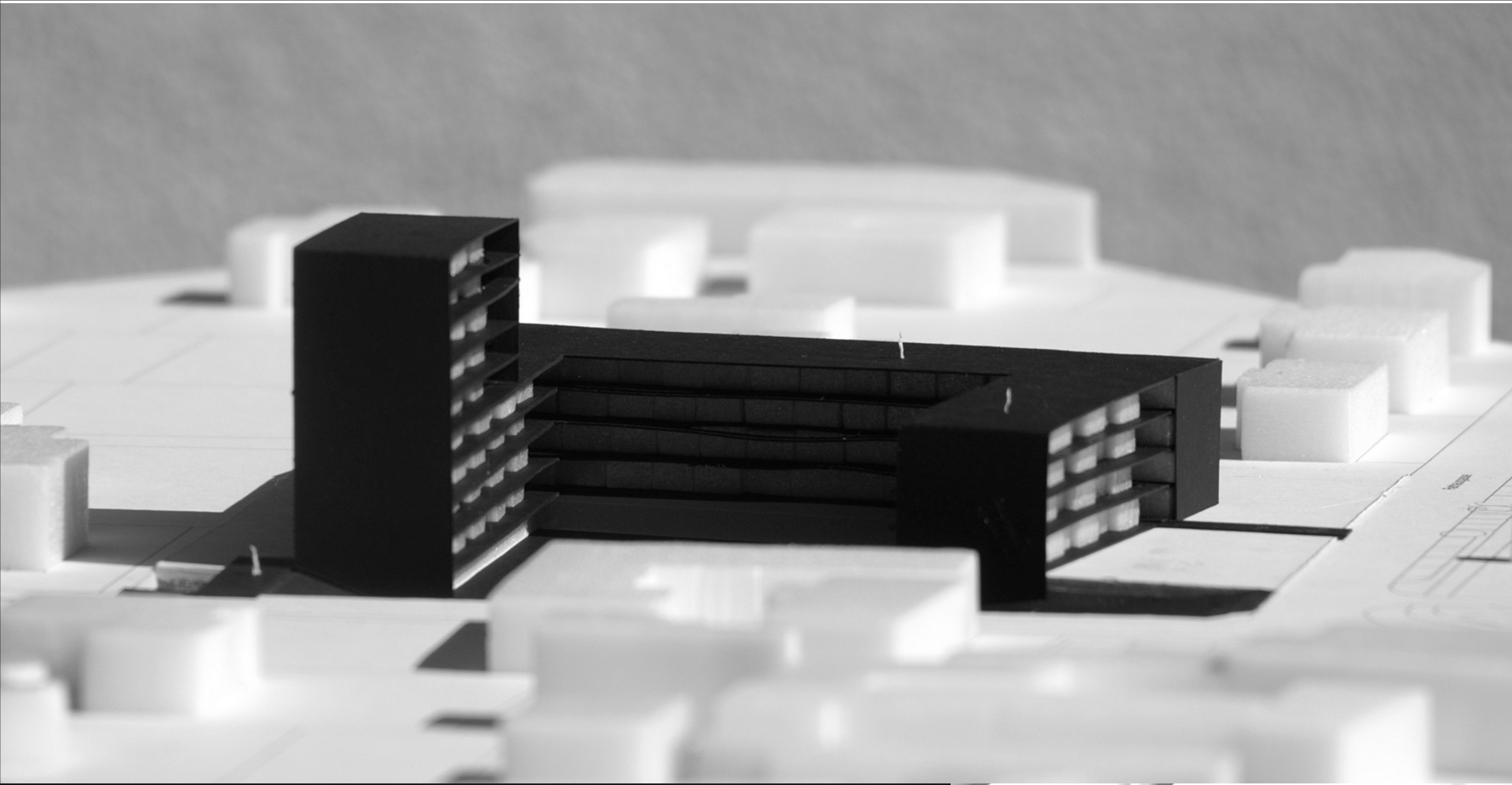
ansichten

wohnbau ss08_gruppe 08 kindermann_glanz neuumaier vollmann



modellfotos

wohnbau ss08_gruppe 08 kindermann_glanz neuumaier vollmann



modellfotos

wohnbau ss08_gruppe 08 kindermann_glanz neuumaier vollmann



visual

wohnbau ss08_gruppe 08 kindermann_glanz neuumaier vollmann